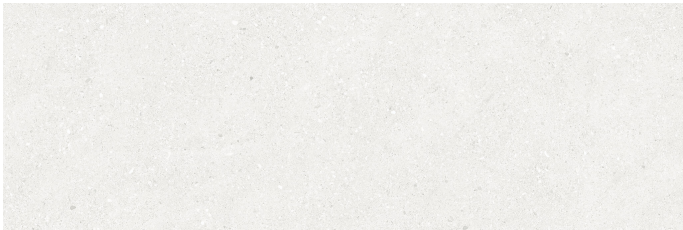


# Series **Granite**



# Granite White Mate 30x90 Rc

30x90 RC



## Technical Data



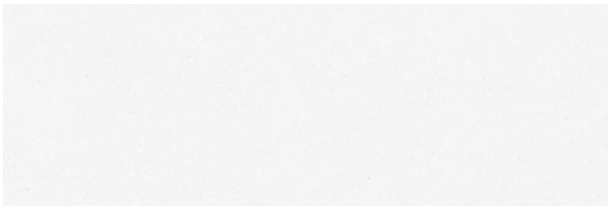
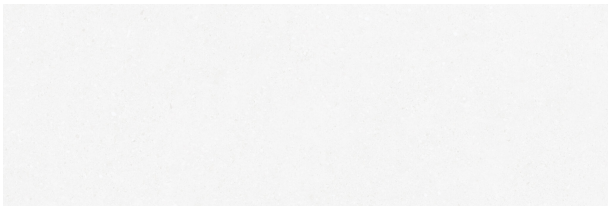
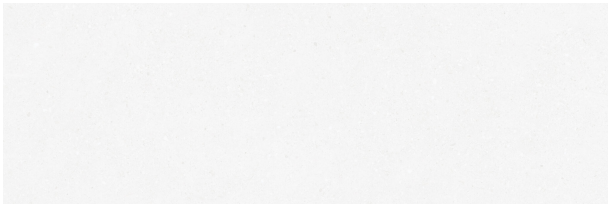
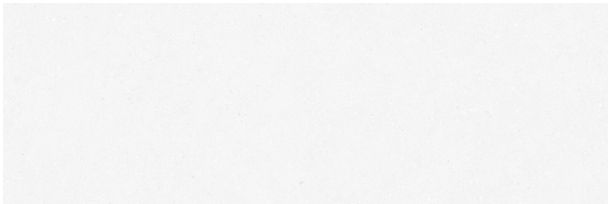
Series: GRANITE  
Product: Granite White Mate 30x90 Rc  
Size: 30x90 RC  
Sales group G.104  
Type: WALL TILE

Type of material White body  
Slipperness R:  
Class:  
UPEC:  
Finish: MATT

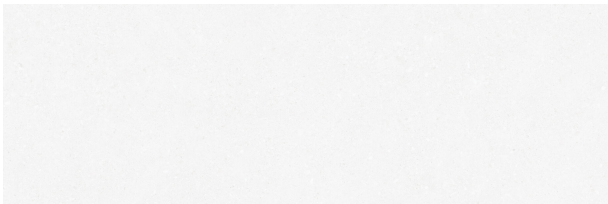
| Size     | Product type | Pcs/Box | M2/Box | Kg/Box | Boxes/Pallet | M2/Pallet | Kg/Pallet |
|----------|--------------|---------|--------|--------|--------------|-----------|-----------|
| 30x90 RC | Field Tile   | 5       | 1,350  | 20,413 | 63,000       | 85,050    | 1286,019  |

Please note: the contents of this packaging list are for guidance only, the contents of the packaging may vary. Please consult our sales staff for the exact list.

**Variations**



Variations



## Technical Data

## Granite White Mate 30x90 Rc

|                  |                        |
|------------------|------------------------|
| Family:          | <b>WALL TILE MATT</b>  |
| Absortion Group: | <b>BIII</b>            |
| Size:            | <b>30x90 RC</b>        |
| Worz Size (mm):  | <b>900 x 300 x 8,7</b> |



## PHYSICAL CHARACTERISTICS

| CHARACTERISTICS                               | STANDARD            | VALUE                     |
|---|---------------------|---------------------------|
| Dimensional tolerances and surface appearance | UNE-EN-ISO 10545-2  | Complies with the standar |
| Water Absortion                               | UNE-EN-ISO 10545-3  | E>10%                     |
| Breaking strenght (N)                         | UNE-EN-ISO 10545-4  | >600                      |
| Flexural tensile strengthn (N/mm2)            | UNE-EN-ISO 10545-4  | >=12                      |
| Thermal shock resistance                      | UNE-EN-ISO 10545-9  | Complies with the standar |
| Cracking resistance                           | UNE-EN-ISO 10545-11 | Complies with the standar |
| Frost resistance                              | UNE-EN-ISO 10545-12 | For indoor use only       |
| Moisture expansion (mm/m)                     | UNE-EN-ISO 10545-10 | 0,2                       |
| Linear thermal expansion from 200°C to 1000°C | UNE-EN-ISO 10545-8  | 5,2x10-6 ?C-1             |
| Reaction to fire                              | UNE-EN-ISO 13501-1  | A1                        |
| DCOF  | DCOF                |                           |

**CHEMICAL CHARACTERISTICS**

| CHARACTERISTICS                                      | STANDARD            | VALUE                      |
|--|---------------------|----------------------------|
| Resistance to staining                               | UNE-EN-ISO 10545-14 | Complies with the standars |
| Resistrance to chemicals and pool treatment products | UNE-EN-ISO 10545-13 | Complies with the standars |
| Resistance to High concentration acids and bases     | UNE-EN-ISO 10545-13 | MIN HB                     |
| Resistance to Low concentration acids and bases      | UNE-EN-ISO 10545-13 | MIN LB                     |