

Series **Alure**



Alure Sage Mate 25x50 Xs Pb

25x50 XS PB



Technical Data



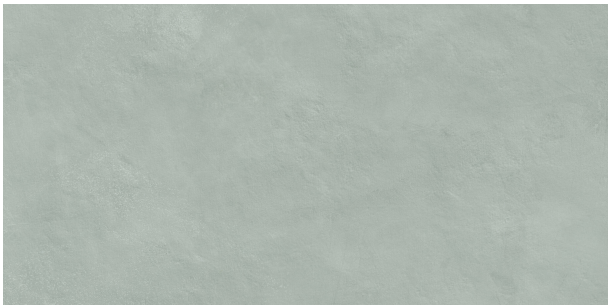
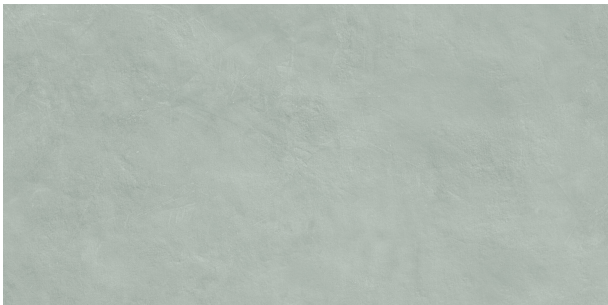
Series: ALURE
Product: Alure Sage Mate 25x50 Xs Pb
Size: 25x50 XS PB
Sales group G.114
Type: WALL TILE

Type of material White body
Slipperness R:
Class:
UPEC:
Finish: MATT

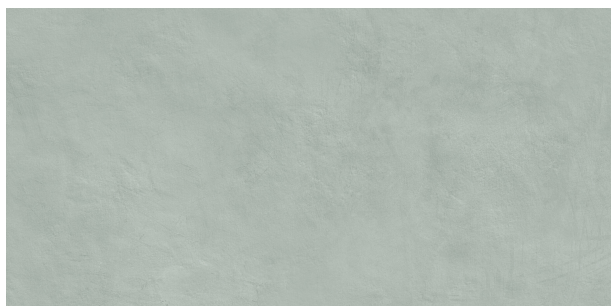
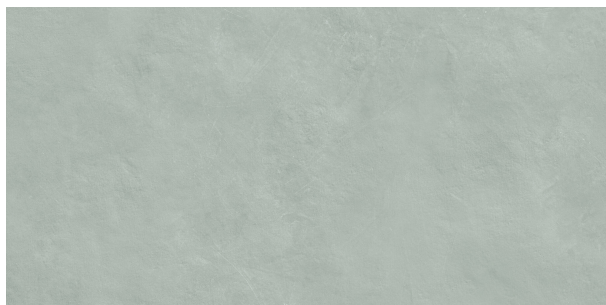
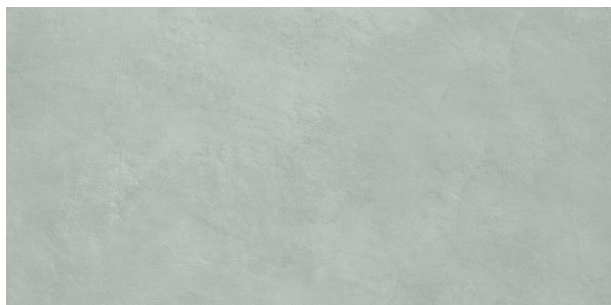
Size	Product type	Pcs/Box	M2/Box	Kg/Box	Boxes/Pallet	M2/Pallet	Kg/Pallet
25x50 XS PB	Field Tile	16	2,000	23,778	36,000	72,000	856,008

Please note: the contents of this packaging list are for guidance only, the contents of the packaging may vary. Please consult our sales staff for the exact list.

Variations



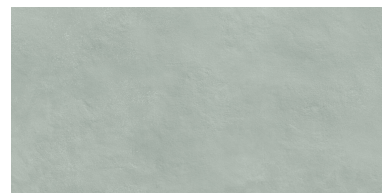
Variations



Technical Data

Alure Sage Mate 25x50 Xs Pb

Family:	WALL TILE MATT
Absortion Group:	BIII
Size:	25x50 XS PB
Worz Size (mm):	500 x 250 x 7,2



PHYSICAL CHARACTERISTICS

CHARACTERISTICS	STANDARD	VALUE
Dimensional tolerances and surface appearance	UNE-EN-ISO 10545-2	Complies with the standar
Water Absortion	UNE-EN-ISO 10545-3	E>10%
Breaking strenght (N)	UNE-EN-ISO 10545-4	>200
Flexural tensile strengthn (N/mm2)	UNE-EN-ISO 10545-4	>=15
Thermal shock resistance	UNE-EN-ISO 10545-9	Complies with the standar
Cracking resistance	UNE-EN-ISO 10545-11	Complies with the standar
Frost resistance	UNE-EN-ISO 10545-12	For indoor use only
Moisture expansion (mm/m)	UNE-EN-ISO 10545-10	0,2
Linear thermal expansion from 200°C to 1000°C	UNE-EN-ISO 10545-8	5,2x10-6 ?C-1
Reaction to fire	UNE-EN-ISO 13501-1	A1
DCOF	DCOF	

CHEMICAL CHARACTERISTICS

CHARACTERISTICS	STANDARD	VALUE
Resistance to staining	UNE-EN-ISO 10545-14	Complies with the standars
Resistrance to chemicals and pool treatment products	UNE-EN-ISO 10545-13	Complies with the standars
Resistance to High concentration acids and bases	UNE-EN-ISO 10545-13	MIN HB
Resistance to Low concentration acids and bases	UNE-EN-ISO 10545-13	MIN LB