

Series **Arven**



Arven Dark Mate 60x120 SI Rc N-plus

60x120 SL RC



Technical Data



Series: ARVEN
 Product: Arven Dark Mate 60x120 SI Rc N-plus
 Size: 60x120 SL RC
 Sales group G.1093
 Type: Porcelain tiles

Type of material Neutral Body
 Slipperness R: R10B
 Class: Class 2
 UPEC:
 Finish: MATT

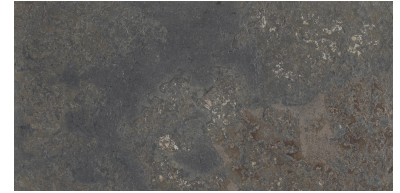
Size	Product type	Pcs/Box	M2/Box	Kg/Box	Boxes/Pallet	M2/Pallet	Kg/Pallet
60x120 SL RC	Field Tile	2	1,440	29,389	36,000	51,840	1058,004

Please note: the contents of this packaging list are for guidance only, the contents of the packaging may vary. Please consult our sales staff for the exact list.

Technical Data

Arven Dark Mate 60x120 SI Rc N-plus

Family:	Porcelain tiles MATT
Absortion Group:	Bla
Size:	60x120 SL RC
Worz Size (mm):	1200 x 600 x 9



PHYSICAL CHARACTERISTICS

CHARACTERISTICS	STANDARD	VALUE
Dimensional tolerances and surface appearance	UNE-EN-ISO 10545-2	Complies with the standar
Water Absortion	UNE-EN-ISO 10545-3	E<0,5%
Breaking strenght (N)	UNE-EN-ISO 10545-4	>1300
Flexural tensile strengthn (N/mm2)	UNE-EN-ISO 10545-4	>=35
Resistance to abrasion (PEI)	UNE-EN-ISO 10545-7	3
Thermal shock resistance	UNE-EN-ISO 10545-9	Complies with the standar
Cracking resistance	UNE-EN-ISO 10545-11	Complies with the standar
Frost resistance	UNE-EN-ISO 10545-12	Complies with the standar
Scratch hardness according to Mohs	UNE-EN-ISO 67101	8
Slipperness resistance Pendulum	UNE-EN 16165:2022 anexo C	Clase 2
Slipperness resistance Inclined platform	UNE-EN 16165:2022 anexo B	R10
Slipperness resistance Barefoot areas	UNE-EN 16165:2022 anexo A	B
Reaction to fire	UNE-EN-ISO 13501-1	A1 - A1 FL
DCOF	DCOF	>0,42

CHEMICAL CHARACTERISTICS

CHARACTERISTICS	STANDARD	VALUE
Resistance to staining	UNE-EN-ISO 10545-14	Complies with the standars
Resistance to chemicals and pool treatment products	UNE-EN-ISO 10545-13	Complies with the standars
Resistance to High concentration acids and bases	UNE-EN-ISO 10545-13	MIN HB
Resistance to Low concentration acids and bases	UNE-EN-ISO 10545-13	MIN LB