

Parqwood Hydro

Classe 33* : the Parqwood Hydro XL et XXL Long are designed for

- Heavy commercial use: bedrooms, living rooms, kitchens, entrances halls, hotel, rooms, offices,...

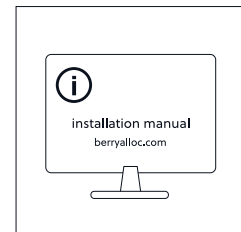
**for products with Ultimtec® varnish finish*



BerryAlloc Parqwood Hydro products are not suitable for saunas, verandas or outdoor use.

For a fast installation and a perfect result that fulfils the warranty conditions, we advise to follow the below mentioned installation instructions carefully. Please also refer to local rules which may vary by country. (for France: floating installation according to DTU 51.11 - May 2024 and glue down installation according to DTU 51.2 - May 2023).

Our BerryAlloc Parqwood Hydro flooring is made of real wood with its ensuing variations in colour and the characteristic knots, which is part of the charm of having a real wood flooring. Depending on their origin and production, the planks may show different variations in tone, even compared to the sample

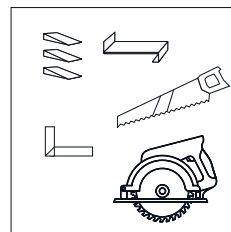
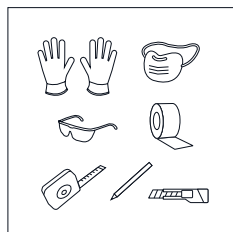
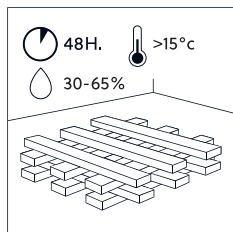


All woods tend to "darken" or "lighten" when exposed to light, this is a natural phenomenon. Therefore, when laying a rug, the wood flooring under the rug will eventually show a more or less marked difference in colour. These nuances will fade over time due to natural oxidation of the wood or the effect of light, but will not disappear completely. Laying a rug is therefore best postponed for a few months (6 months to a year) for the wood tones to even out before doing this.

Wood is a living material that evolves according to the seasons. It is normal and natural for it to expand and shrink depending on the temperature and humidity (for example during periods when the heating is on). In general, a glue down installation will ensure better long-term durability of Parqwood Hydro, especially in wet rooms.

The text below describes both floating and **glued installation** of BerryAlloc Parqwood Hydro.

1. Planning your installation



It is important to store the BerryAlloc Parqwood Hydro boxes at room temperature for at least 48 hours prior to the installation. Do not open the packs, and stack them in a way they have maximum contact with the air. The floor should be installed at a room temperature of min. 15°C and a relative humidity of 30-65%.

As this is a wood product, variations in temperature and humidity outside of these conditions will result in contraction or expansion beyond its standard tolerances.

We highly recommend keeping one end-label of the boxes together with the receipt, as this provides information on the production date and décor (production date is also visible on the back of each plank). For a consistent colour rendering, it is important to verify that all the packs available for the site are from the same production batch (the first 5 digits of the production number must be the same).

A floor is considered as an interior product, and should be treated accordingly, both during and after installation. The installation of the floor must be one of the last operations to be performed on the job site. Check that the ventilation in the building is running. Make sure to cover the floor (with suitable breathable protection) if any other necessary work takes place after the installation.

Tools

BerryAlloc Parqwood Hydro products do not require any special tools for installation, but we recommend that the following equipment is available during installation:

- Saw (circular saw, jigsaw, mitre saw or handsaw) with a new blade with fine teeth to avoid any risk of chipping on planks and to preserve the surface protection
- Square, sliding bevel
- Spacers
- Measuring tape
- Pencil

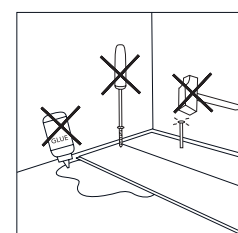
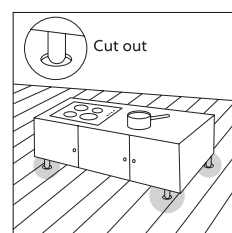
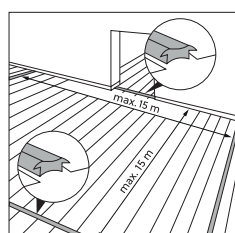
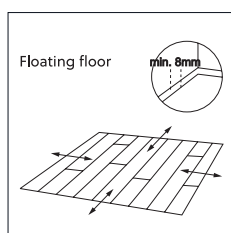
For your safety, use protective clothing: gloves, dust mask, protective glasses, hearing protection.

In case of a glued installation of the BerryAlloc Parqwood Hydro, we recommend using BerryAlloc Wood Floor Glue (Ref. 63003597), in combination with a B3 spatula which allows for the application of $\approx 600\text{g}/\text{m}^2$. Remember to use the same distance to fixed points as for a floating installation (5 mm).

On concrete or floating mass subfloor, a moisture barrier need to be installed, so either with enough glue (over $0,8\text{ L}/\text{m}^2$) or a liquid moisture barrier on the subfloor, before glue.

If the responsibility of using another glue is taken, it needs to match the product specifications of the BerryAlloc Wood Floor Glue. Always follow the glue manufacturer's instructions and check the suitability of the adhesive in advance under real conditions for the intended application and purpose.

Additional to the necessary tools do not forget skirting and any expansion profiles (in doorways, transitions to other floors etc.).





If BerryAlloc Parqwood Hydro is installed as a floating floor, it must be able to move freely:

- Do not screw or glue the floorboards to the subfloor.
- Do not install fixed constructions such as kitchen cabinets or built-in closets on top of the floating floor. The weight of the object (when fastened to the wall) must rest only on the subfloor.
- Leave a min. 8mm expansion gap to walls and other fixed constructions so that the flooring can move.

For areas beyond 15m wide and 15m long, or when an underfloor heating system does not cover the entire floor area (separate heated/nonheated areas) install expansion profiles between these two areas.

BerryAlloc Parqwood Hydro must be able to move around fixed constructions to avoid open joints/lock separation. This can be achieved by following one of two approaches:

- Start by installing the fixed constructions (kitchen cabinets, fireplace, staircase etc.) followed by the installation of BerryAlloc Parqwood Hydro around the objects.
- Start by installing BerryAlloc Parqwood Hydro followed by the installation of the fixed constructions. Mark on the floor where the objects will be positioned and make holes for any furniture legs (alternatively, separate the area underneath by sawing an expansion joint which follows the perimeter of the object).

With a glued installation method, there are no length or width restrictions. Keep the same distance to the walls (5mm). T-profiles are not necessary and fixed constructions can be placed directly on the floorboards (including kitchen cabinets).

Whenever there is a functional, constructional joint in the subfloor, or if there is an underfloor heating joint in the screed, it is required to use a T-profile nonetheless.

N.B. : *When installing BerryAlloc Parqwood Hydro in the kitchen, opt for a glued-down installation to ensure better floor stability over time. This will also allow kitchen units to be installed directly on the BerryAlloc Parqwood Hydro.*

Floating installation without T-profile

In some cases, the installation of BerryAlloc Parqwood Hydro without profile in doorways is desired. This kind of installation could be done if and only if all the requirements in the installation instructions are followed, and especially the fact that the floor must remain floating from the initial installation.

To make this installation a success, special attention needs to be given to:

- The evenness of the subfloor (max. 5 mm under 2 m and max. 1 mm under 20 cm);
- The level of subfloor moisture and air humidity;
- The use of a BerryAlloc underlay suitable for BerryAlloc Parqwood Hydro;
- Respecting the expansion gaps to all walls/fixed points surrounding the entire installation;
- The maximum length and width are 15m;
- Adjacent rooms should have the same conditions to avoid different behaviour and internal stress (ideally with air conditioning system).

Where the expansion gap unavoidably remains visible, the best solution is to use our FillerTwine with a (coloured) flexible sealant on top. This can be done around metallic door frames, posts, staircases, ...

However, this type of installation cannot be done in the following cases:

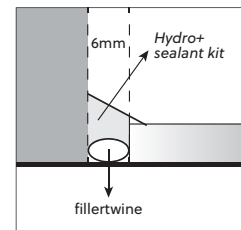
- If the installation area includes zones with and without underfloor heating, in that case, they should be separated by a T-profile. In the same way, different heating circuits must be separated by T-profiles if they are not turned on/off at the same time;
- Due to high humidity conditions and in order to avoid water infiltration problems, separate the bathroom floor from the rest of the floor with an expansion profile;
- When there is a building expansion joint (transfer the joint to the floor covering).

N.B. : In the event of issues such as joint openings, height differences between planks, lifting planks or creaking/squeaking noises, it will be essential to install T-profiles at transitions between rooms to try to reduce these issues. Damaged planks must be replaced. These anomalies are related to installation constraints and are not covered by the BerryAlloc warranty.

Bathroom installation

Parqwood Hydro can be installed in wet rooms such as bathrooms under standard and responsible domestic use, meaning under conditions of daily use without excessive splashing or prolonged standing water. The product is designed to withstand controlled ambient humidity and normal splashing, provided that the installation and maintenance guidelines are strictly followed:




- Use a circular saw with a new, fine-toothed blade to prevent splintering.
- Install a high-performance mechanical ventilation system (MVHR) or equivalent to maintain stable humidity and remove residual moisture from the room.
- Create a minimum 6 mm expansion gap filled with Filler Twine and BerryAlloc sealant (Hydro+ 2-in-1 kit - 63002897) to ensure a watertight seal around the perimeter.
- Install a T-profile between the bathroom and other rooms (for floating installation).
- Install a physical barrier between the shower and the Parqwood Hydro flooring (glass screen, threshold, riser).
- Quickly wipe up any splashes or standing water to prevent seepage through the joints or prolonged contact with the surface.
- Place an absorbent and breathable bath mat in front of the shower/bathtub to catch water as you get out. Remove the damp mat and let it dry off the floor to prevent prolonged dampness.
- If using wooden skirting boards, protect their base from rising damp with Hydro+ Skirting Strip (63002900).
- Repair any scratches with the appropriate BerryAlloc tinted varnish to maintain surface protection.

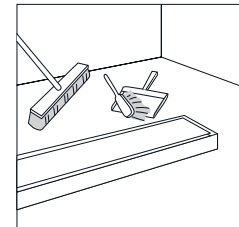
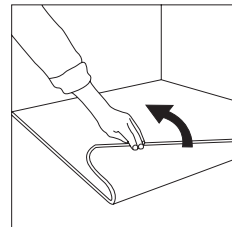
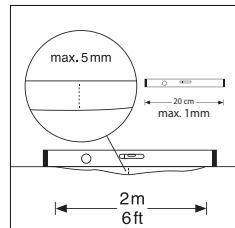


N.B. : Parqwood Hydro cannot be installed in the shower area or in rooms with a floor drain. Damage resulting from direct exposure to water is not covered by the warranty.

2. Preparing the subfloor

BerryAlloc Parqwood Hydro can be installed on most hard and non-tacky subfloors, e.g. chip-/plasterboards, compact PVC and linoleum (residual indentation < 0,1mm) or concrete/screed.

| | |
|---|---|
|  | Cement RH max. 85% max. 3 CM % |
|  | Wood RH max. 50% |
|  | Plaster max. 0,5CM % |



The subfloor must be:

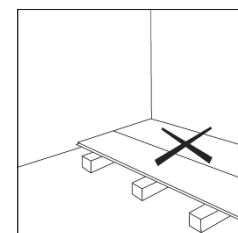
- **Clean:** thoroughly clean the surface of the base to eliminate all residue and irregularities from the old covering.
- **Flat:** check flatness with a 2-m ruler, holes or bumps should be limited to 5mm per 2m and 1mm per 20cm. Sand or patch (level) if necessary.
- **Healthy:** remove any dust or grease from the subfloor. There should be no remnants of powder, cracks or crust.
- **Dry:** the humidity of a cement screed or patching should not exceed 3% using the carbide meter method (on average, for normal screeds, allow for at least 15 days per centimetre of thickness. In case of levelling, allow for at least 5 days per 3 mm):
 - o Concrete and screed, max. 3,0 CM % (1,8 CM % if floor heating).
 - o For calcium sulphate liquid screeds, the residual humidity must be 0.5% or under.
 - o Wood base: the maximum degree of humidity of wood bases is 12% (measurement using a pin moisture meter).

In case of any specific national standard, this will be accepted. Sharp unevenness must be sanded down and any holes filled.

Secure the subfloor construction from squeaking or other noises. Soft material, like wall-to-wall carpets and cushion vinyl (CV), needs to be removed. Clean the subfloor before starting the installation. On an existing wooden floor, BerryAlloc Parqwood Hydro should be installed across the old floorboards.

When covering a wooden subfloor, it will be necessary for it to remain ventilated in order to avoid any deterioration of the surface due to excess humidity.

N.B. : For specific subfloors, we recommend to seek advice from BerryAlloc technical support. We draw your attention to the fact that BerryAlloc Parqwood Hydro is not load-bearing, so installation on joists is not possible, nor is installation on a raised technical floor.





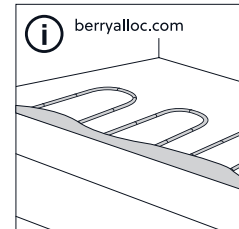
A glued installation is recommended to be done by a professional floor layer.

Make sure that the subfloor is even, dry, stable, clean, and free from any grease or chemical substances. If needed, scrape off and clean up/remove old adhesives.

Otherwise, the subfloor requirements are the same for a glued installation as it is for the floating (considering that BerryAlloc Parqwood Hydro should not be glued on to PVC or linoleum).

3. Underfloor heating / cooling

The heating must be switched off 48 hours before applying the levelling compound or laying the BerryAlloc Parqwood Hydro and must not be switched on again until at least one week after the end of the installation. The temperature should then be increased gradually, with the surface temperature not exceeding 27°C.



For more detailed instructions on underfloor heating, including electric and waterborne systems, please read the underfloor heating manual on our website www.berryalloc.com.

N.B. : A glue down installation is strongly recommended for better efficiency of the heating system and better performance of the BerryAlloc Parqwood Hydro over time.

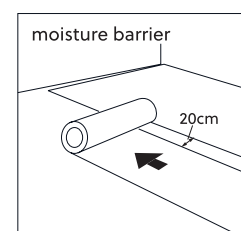
4. Underlays

For a floating installation, an underlay must be installed under the BerryAlloc Parqwood Hydro.

Our Excellence Plus underlay (SEPLUS10) allows for a quality installation: low compressibility (CS > 130 kPa), stability under the Parqwood Hydro, reduction of the walking sound, compatibility with underfloor heating, etc. This underlay has been specifically designed for BerryAlloc Parqwood Hydro, in compliance with current standards (NF B53-676 - Parquet underlay), tested and validated by the FCBA, for a guarantee of perfect results.

N.B. : In case of problems caused by a non-compatible underlay, the warranty will not apply.

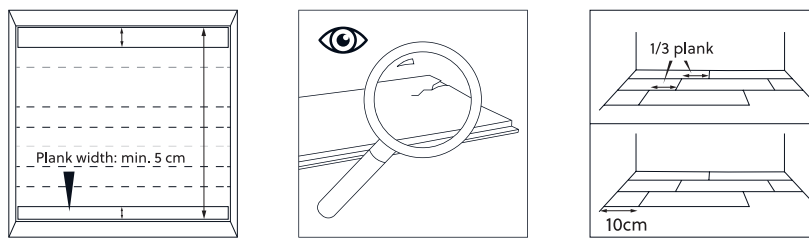
For hydraulic binder-based substrates or any substrate that may be subject to rising damp, BerryAlloc Moisture Barrier polyethylene film (WD158235) must be placed under the underlay (it should be installed with a minimum overlap of 20 cm or with an overlap of 10 cm if it is held in place by an adhesive strip at least 20 mm wide if this is integrated). The PE film can cause excess thickness, so make sure to stretch it and remove any wrinkles. Cut the PE film cleanly once the floor has been installed.



N.B. : The purpose of this barrier is to prevent any rising damp. It does not constitute a completely waterproof barrier if the quantity of rising damp is significant.

5. Getting started

We strongly recommend watching our installation video and to read/download the warranty conditions on our website.

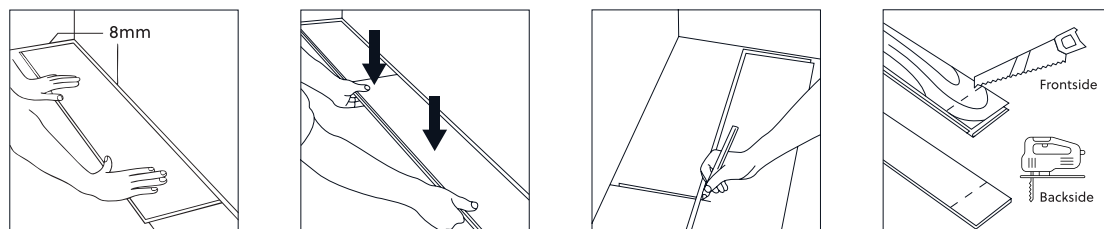


Direction of the floorboards: the floor will look at its best if installed parallel to the incoming light (short side facing the light).

Measure the length of the room from the point where the installation is planned to start to the wall where it will end. Divide this by the width of a plank. The purpose is to never end with a plank that is less than 5cm wide. If that is the case, modify the width of the first row (saw the plank so the installation doesn't start with a full width plank, but it should be more than 5cm).

Check all floorboards for visible defects in optimal light conditions, both before and during installation. Floorboards with defects must not be used. A defective floorboard that has been installed is considered accepted and will not be accepted as the cause of a claim after the installation is completed.

Wood is not a uniform material, each plank is unique. In order to distribute the colour variations, different structures and knots harmoniously, we recommend to open 3 packs at the time of installation, and match the planks to get the desired appearance. The end joints should be staggered min. 1/3 of the length of the floorboard when installing the floorboards. The first and the last floorboard in each row should have a minimum length of 10 cm.



Start in the top left corner. Place the floorboard with the locking profiles facing the room and install towards the right. Ensure to have a tight short side connection between the floorboards. Continue in the same way with the next floorboards in the same row. Leave a gap of min. 8mm between the short sides of the floorboards and the walls (use spacers). The gap between the long side and the wall can be adjusted after 3 rows have been installed.

At the end of the row, place a floorboard upside down against the wall to cut it to the exact length, taking the expansion gap into account. Mark where the floorboard needs to be cut and mark the cut with a T-square. When using a hand saw or circular saw, cut the floorboard with the decorative side facing down. If using an electric jigsaw, place the decorative side facing down. For best results, a fine-toothed circular saw is ideal.

We advise to test install 3 rows before applying glue to the subfloor. In this way the floor can be aligned to the wall without having glue attached to the rear side. Afterwards, apply the glue to the subfloor, place the first floorboards as described above leaving a gap of 5mm to the wall.

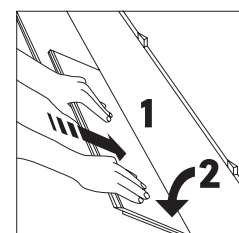
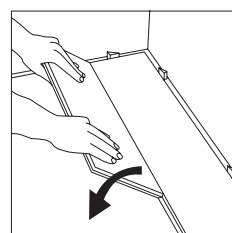
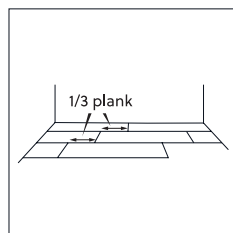
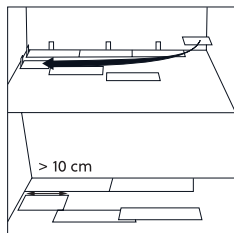
This method can also be used in tricky sections such as corners or under door frames.

As a recommendation, we suggest applying glue for 3 rows at a time, ensuring that the glue's open time does not elapse before the floorboards are positioned.

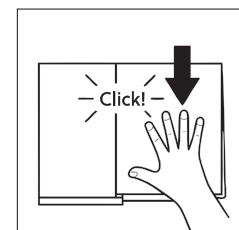
Try to limit movement on the BerryAlloc Parqwood Hydro until the floor installation is completed, and the curing time for the glue has elapsed, as this will compromise the curing process. Always check opening and curing times for the glue chosen, as the above suggestions are general.

6. Easy and fast installation

The BestLoc X-Treme system is extremely easy and fast, which allows installing floorboards with almost no effort.



After installing the first row, simply lock the long side of the second row first, then fold the floorboard down on the short side, it will lock automatically. Place the first floorboard at an angle of +/- 20° in the plank's Loc on the long side of the previous row so that it tilts downwards on its own (towards the planks already installed, without vertical action). Place the next floorboard in the same way, while positioning the short side so that it is directly above the Loc of the previously installed floorboard. Apply hand pressure, several times and without forcing, on the long side of the floorboard, towards the starting wall to assemble the floorboards together (use of a mallet or hammer is prohibited).

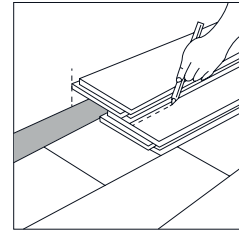


Parqwood hydro BestLoc X-Treme. installation manual.

BERRY  ALLOC



The first and last row must be more than 5 cm wide. Measure the width of the last row. Leave a gap of min. 8mm to the wall. Cut off (lengthwise) the excess part with the locking profile. Install the cut floorboard. This method should be repeated for each floorboard until the last row is complete. Use an angle iron when installing the last floorboard in the row (included in BerryAlloc Startkit – Ref. WD180000).

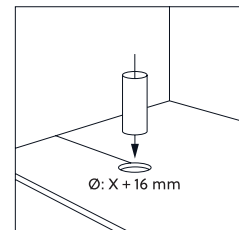


BerryAlloc Parqwood Hydro installed following the floating method, can be used immediately after installation.

Whenever BerryAlloc Parqwood Hydro is glued, it is important to check the curing time of the selected glue, to know when it is possible to use the floor normally.

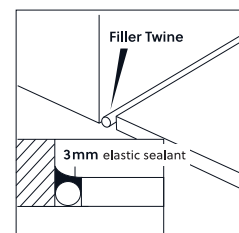
Pipes/columns

Drill holes in the floorboard, the diameter of the hole must be 16 mm larger than the diameter of the pipe. For fixed installations, like pipes, cut out the necessary piece in an angle of 45°. Glue the cut piece back into position and cover with pipe sleeves or flexible sealant (see next point).



Termination towards a fixed construction with elastic sealant

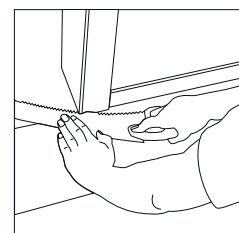
Leave a gap of min. 8mm and fill the gap with BerryAlloc Fillertwine (63000771). Cover afterwards with a thin layer of flexible sealant (>25% elasticity) in a matching colour. The use of an elastic sealant will reduce the movement of the floor and should only be used in a limited number of places (see illustration).



N.B. : Do not fill expansion gaps completely with sealant.

Door frames

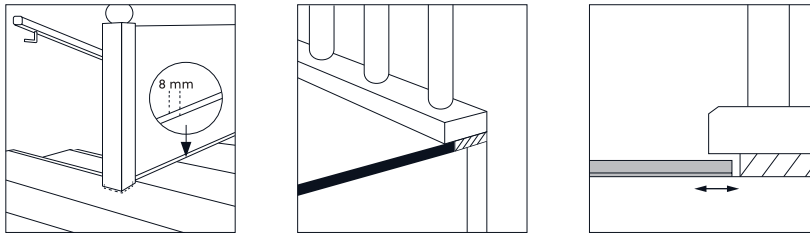
We strongly recommend adjusting the door frames to allow installation of the floor underneath the frames (to allow free movement and achieve a good overlap with the floor). During the sawing, use a piece of floorboard as a support (turned upside down), when modifying the door frames to the correct height (see illustration). When the door frame cannot be cut, BerryAlloc Filler Twine and elastic sealant can be used to cover the expansion gap.



parqwood hydro.

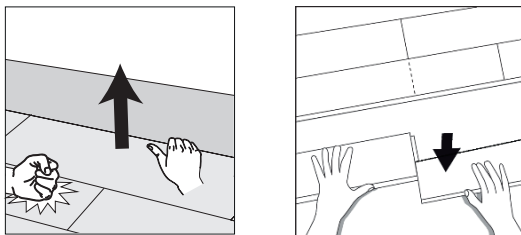
Stair railings, thresholds and other screwed/fixed objects

We recommend installing a wooden plank (slightly thicker than the floor) before fastening the stair railing/other screwed objects to the subfloor (see illustrations). Same applies to glued thresholds. This will allow free movement and achieve a good overlap with the floor.



Dismantling the floor (only floating installation)

Lift the row a few cm and tap with your fist along the long side joint of the floorboards. The row is released and can gently be pulled out. To release the floorboards on the short end, we recommend sliding the planks against each other.



N.B. : Consult the specific manual if the replacement of a plank is necessary. Remember to keep some spare floorboards in a sealed pack under good conditions for possible future use.

7. A perfect finish

BerryAlloc offers a wide range of accessories with a timeless design for the finishing touch:

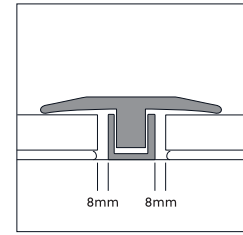
- Matching skirtings 65mm
- Matching reducer, end and T-profile
- Aluminium reducer and T-profile

Paintable white skirting is also available and can be used unpainted, or they can be painted in the colour of your choice. When installing accessories, always keep in mind that the floor must remain able to move. This means:

- After having installed a skirting or profile, do not seal/fix it to the floorboards with sealant. The movement of the floor will cause cracks in the sealant which makes it ineffective and unesthetic.
- Joints on fixed building elements (door frames, heating pipes, etc.) should never be sealed with sealant. Use a BerryAlloc Filler Twine first and then finish with a flexible sealant that allows the floor to move.
- Profiles, doorstops, and suchlike should not be screwed through the floorboards into the subfloor.

T-profile (incl. U-profile)

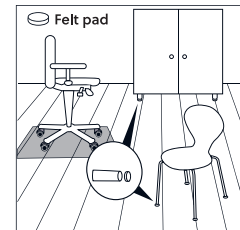
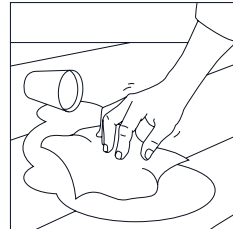
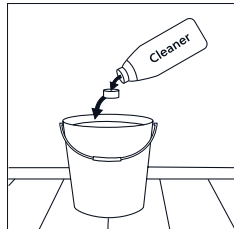
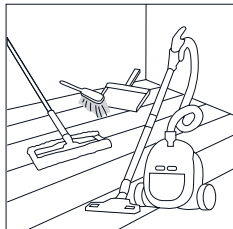
Fix the U-profile to the subfloor and leave a gap of 8 mm to the floor areas. Click the T-profile in place after having installed the complete floor. The floor areas should be able to move freely.



Skirtings

The skirting can be glued or nailed (with a nail gun) to the wall. Be careful not to glue or seal the skirting to the floor.

8. Care and maintenance



After installation it is required to maintain a room temperature of min. 15°C and a relative humidity level between 30-65% (optimum level 40-50%). During wintertime, the air in the rooms is usually extremely dry (up to 20% occasionally), and for this reason it is strongly recommended to use humidifiers to maintain a constant humidity level. In the summer and autumn, when there is a high relative humidity (above 75% on occasion), the room should be well ventilated. Too low/high relative humidity may cause irreversible damage to the floor, such as opened joints, warping and squeaking sound.

BerryAlloc Parqwood Hydro is amazingly easy to clean:

- **DRY CLEANING:** with a brush, mop with dry wipes or vacuum cleaner
- **WET CLEANING:** with a well wrung-out cloth

Clean up any spilled liquids immediately, special attention should be paid when installing BerryAlloc Parqwood Hydro in a kitchen. We strongly recommend using the BerryAlloc Parquet Cleaner (63002726) for varnished finishes as it has been specially developed to clean our BerryAlloc Parqwood Hydro and leaves no traces.

Never use steam cleaners on BerryAlloc Parqwood Hydro.

Put doormats at every entrance to protect the BerryAlloc Parqwood Hydro from dirt and sand. Always lift heavy furniture while moving them and put felt pads on the legs of chairs and furniture to prevent scratches and punctures. Use clear chair mats under rolling (office) chairs.

For more details, read our care and maintenance manuals for Parqwood Hydro.

9. Warranty

By following the above-mentioned instructions, the longevity of the BerryAlloc Parqwood Hydro will be extended and the validity of the warranty ensured.

We refer to our warranty conditions for more info.

Legal information

This document presents the general installation instructions, based on the latest available information. For the best result, and to ensure the validity of the guarantee, these instructions should be followed carefully. This document replaces all previous versions and is valid until further notice. This information is a representation of the technical knowledge at the time that this document was produced/published and may be amended, complemented, or replaced at any time.

Please check the following website frequently for updates: [www. berryalloc.com](http://www.berryalloc.com)

10. Installation videos

