

Series **Opal**

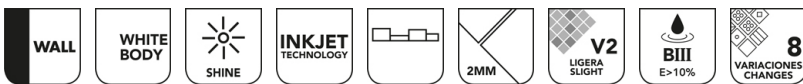


Opal Decor Sky Brillo 7,5x30

7,5x30



Technical Data



Series: OPAL
 Product: Opal Decor Sky Brillo 7,5x30
 Size: 7,5x30
 Sales group G.126
 Type: WALL TILE

Type of material White body
 Slipperness R:
 Class:
 UPEC:
 Finish: GLOSSY

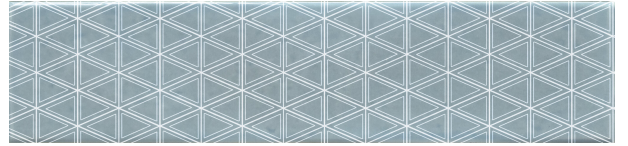
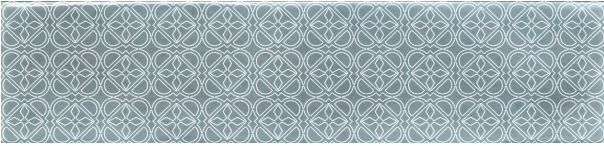
| Size | Product type | Pcs/Box | M2/Box | Kg/Box | Boxes/Pallet | M2/Pallet | Kg/Pallet |
|--------|--------------|---------|--------|--------|--------------|-----------|-----------|
| 7,5x30 | Decor | 22 | 0,500 | 7,697 | 96,000 | 48,000 | 738,912 |

Please note: the contents of this packaging list are for guidance only, the contents of the packaging may vary. Please consult our sales staff for the exact list.

Variations



Variations



Technical Data

Opal Decor Sky Brillo 7,5x30



| | |
|------------------|-------------------------|
| Family: | WALL TILE GLOSSY |
| Absortion Group: | BIII |
| Size: | 7,5x30 |
| Worz Size (mm): | 301 x 75.5 x 9 |

PHYSICAL CHARACTERISTICS

| CHARACTERISTICS | STANDARD | VALUE |
|---|---------------------|---------------------------|
| Dimensional tolerances and surface appearance | UNE-EN-ISO 10545-2 | Complies with the standar |
| Water Absortion | UNE-EN-ISO 10545-3 | E>10% |
| Breaking strenght (N) | UNE-EN-ISO 10545-4 | >600 |
| Flexural tensile strengthn (N/mm2) | UNE-EN-ISO 10545-4 | >=12 |
| Thermal shock resistance | UNE-EN-ISO 10545-9 | Complies with the standar |
| Cracking resistance | UNE-EN-ISO 10545-11 | Complies with the standar |
| Frost resistance | UNE-EN-ISO 10545-12 | For indoor use only |
| Moisture expansion (mm/m) | UNE-EN-ISO 10545-10 | 0,2 |
| Linear thermal expansion from 200°C to 1000°C | UNE-EN-ISO 10545-8 | 5,2x10-6 ?C-1 |
| Reaction to fire | UNE-EN-ISO 13501-1 | A1 |
| DCOF | DCOF | |

CHEMICAL CHARACTERISTICS

| CHARACTERISTICS | STANDARD | VALUE |
|---|---------------------|----------------------------|
| Resistance to staining | UNE-EN-ISO 10545-14 | Complies with the standars |
| Resistance to chemicals and pool treatment products | UNE-EN-ISO 10545-13 | Complies with the standars |
| Resistance to High concentration acids and bases | UNE-EN-ISO 10545-13 | MIN HB |
| Resistance to Low concentration acids and bases | UNE-EN-ISO 10545-13 | MIN LB |