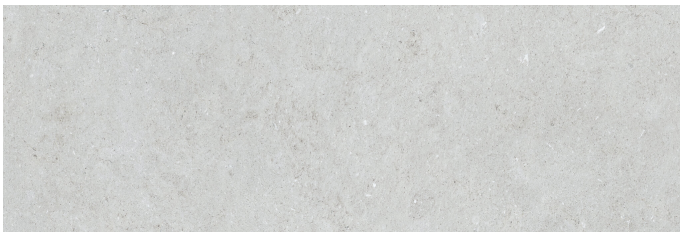


# Series Cronos



# Cronos Pearl Mate 40x120 Rc

40x120 RC



## Technical Data



Series: CRONOS  
 Product: Cronos Pearl Mate 40x120 Rc  
 Size: 40x120 RC  
 Sales group G.180  
 Type: WALL TILE

Type of material White body  
 Slipperness R:  
 Class:  
 UPEC:  
 Finish: MATT

Size	Product type	Pcs/Box	M2/Box	Kg/Box	Boxes/Pallet	M2/Pallet	Kg/Pallet
40x120 RC	Field Tile	3	1,440	28,100	20,000	28,800	562,000

Please note: the contents of this packaging list are for guidance only, the contents of the packaging may vary. Please consult our sales staff for the exact list.

**Technical Data**

**Cronos Pearl Mate 40x120 Rc**

Family: **WALL TILE MATT**  
 Absortion Group: **BIII**  
 Size: **40x120 RC**  
 Worz Size (mm): **1200 x 400 x 10,8**



**PHYSICAL CHARACTERISTICS**

CHARACTERISTICS	STANDARD	VALUE
Dimensional tolerances and surface appearance	UNE-EN-ISO 10545-2	Complies with the standar
Water Absortion	UNE-EN-ISO 10545-3	E>10%
Breaking strenght (N)	UNE-EN-ISO 10545-4	>600
Flexural tensile strengthn (N/mm2)	UNE-EN-ISO 10545-4	>=12
Thermal shock resistance	UNE-EN-ISO 10545-9	Complies with the standar
Cracking resistance	UNE-EN-ISO 10545-11	Complies with the standar
Frost resistance	UNE-EN-ISO 10545-12	For indoor use only
Moisture expansion (mm/m)	UNE-EN-ISO 10545-10	0,2
Linear thermal expansion from 200°C to 1000°C	UNE-EN-ISO 10545-8	5,2x10-6 ?C-1
Reaction to fire	UNE-EN-ISO 13501-1	A1
DCOF	DCOF	

**CHEMICAL CHARACTERISTICS**

<b>CHARACTERISTICS</b>	<b>STANDARD</b>	<b>VALUE</b>
Resistance to staining	UNE-EN-ISO 10545-14	Complies with the standars
Resistrance to chemicals and pool treatment products	UNE-EN-ISO 10545-13	Complies with the standars
Resistance to High concentration acids and bases	UNE-EN-ISO 10545-13	MIN HB
Resistance to Low concentration acids and bases	UNE-EN-ISO 10545-13	MIN LB