

# Series **Alure**



# Alure Terra Mate 30x75 Rc Pb

30x75 RC PB



## Technical Data



Series: ALURE

Product: Alure Terra Mate 30x75 Rc Pb

Size: 30x75 RC PB

Sales group G.132

Type: WALL TILE

Type of material White body

Slipperness R:

Class:

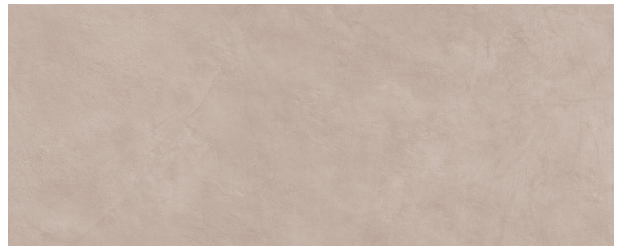
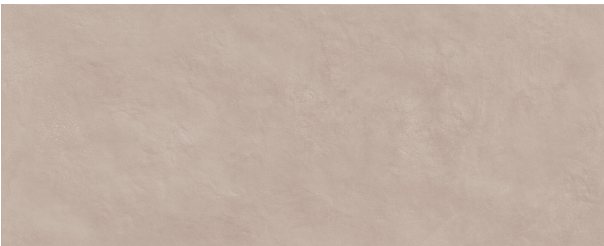
UPEC:

Finish: MATT

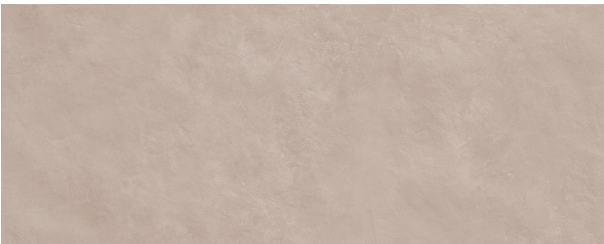
Size	Product type	Pcs/Box	M2/Box	Kg/Box	Boxes/Pallet	M2/Pallet	Kg/Pallet
30x75 RC PB	Field Tile	7	1,575	21,278	54,000	85,050	1149,012

Please note: the contents of this packaging list are for guidance only, the contents of the packaging may vary. Please consult our sales staff for the exact list.

**Variations**



**Variations**



## Technical Data

## Alure Terra Mate 30x75 Rc Pb

Family:	<b>WALL TILE MATT</b>
Absortion Group:	<b>BIII</b>
Size:	<b>30x75 RC PB</b>
Worz Size (mm):	<b>750 x 300 x 8</b>



## PHYSICAL CHARACTERISTICS

CHARACTERISTICS	STANDARD	VALUE
Dimensional tolerances and surface appearance	UNE-EN-ISO 10545-2	Complies with the standar
Water Absortion	UNE-EN-ISO 10545-3	E>10%
Breaking strenght (N)	UNE-EN-ISO 10545-4	>600
Flexural tensile strengthn (N/mm2)	UNE-EN-ISO 10545-4	>=12
Thermal shock resistance	UNE-EN-ISO 10545-9	Complies with the standar
Cracking resistance	UNE-EN-ISO 10545-11	Complies with the standar
Frost resistance	UNE-EN-ISO 10545-12	For indoor use only
Moisture expansion (mm/m)	UNE-EN-ISO 10545-10	0,2
Linear thermal expansion from 200°C to 1000°C	UNE-EN-ISO 10545-8	5,2x10-6 ?C-1
Reaction to fire	UNE-EN-ISO 13501-1	A1
DCOF	DCOF	

**CHEMICAL CHARACTERISTICS**

<b>CHARACTERISTICS</b>	<b>STANDARD</b>	<b>VALUE</b>
Resistance to staining	UNE-EN-ISO 10545-14	Complies with the standars
Resistrance to chemicals and pool treatment products	UNE-EN-ISO 10545-13	Complies with the standars
Resistance to High concentration acids and bases	UNE-EN-ISO 10545-13	MIN HB
Resistance to Low concentration acids and bases	UNE-EN-ISO 10545-13	MIN LB